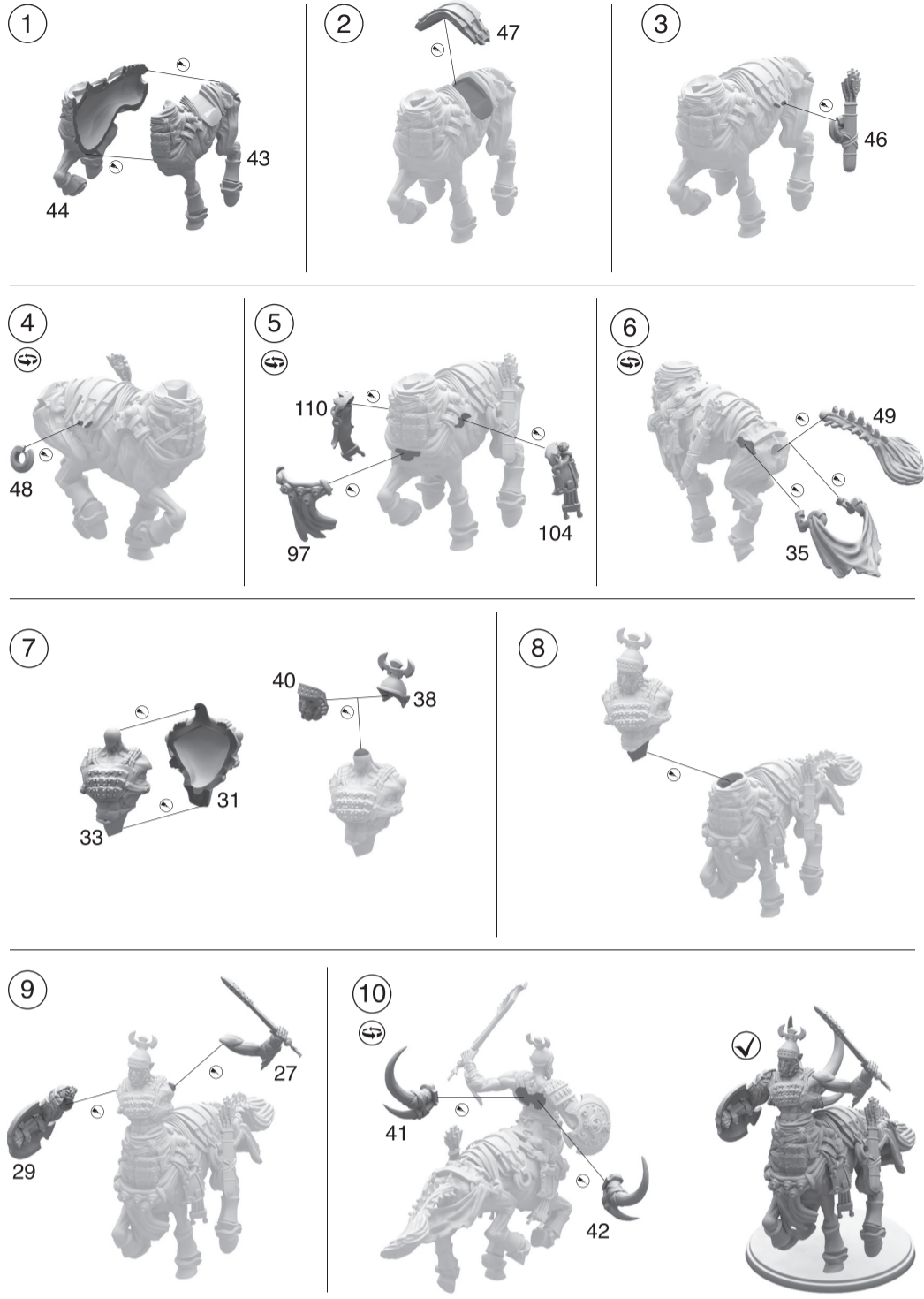
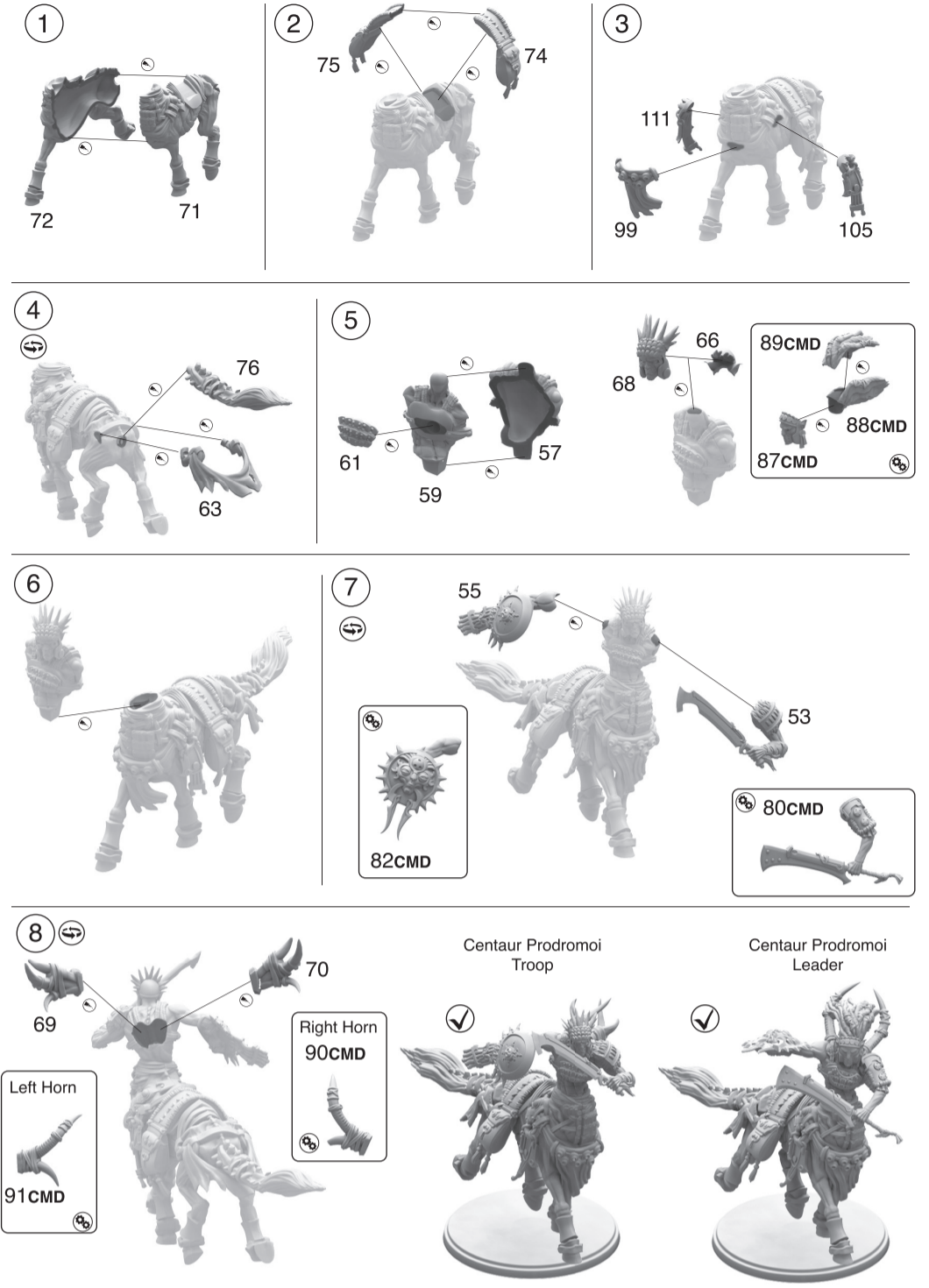


Centaur Prodrmoi - Pose 2



Centaur Prodrmoi - Pose 3 and Leader



Centaur Kerykes/Centaur Prodrmoi Assembly Instructions

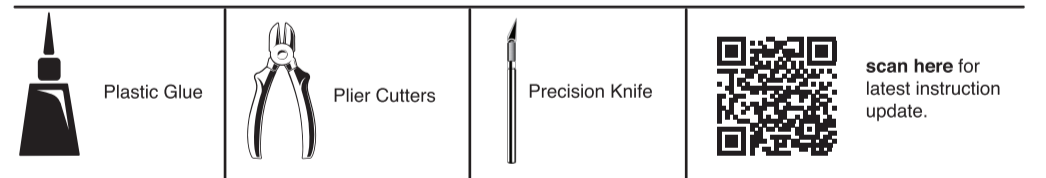
READ THIS FIRST

BEFORE ASSEMBLING YOUR MODEL KIT PLEASE READ THROUGH THE INSTRUCTIONS IN THIS BOOKLET CAREFULLY. A pair of plastic cutters is required to remove the plastic components in this kit from their frame. We advise using a mouldline scraping to clean up the parts. To assemble your model you will need plastic glue.

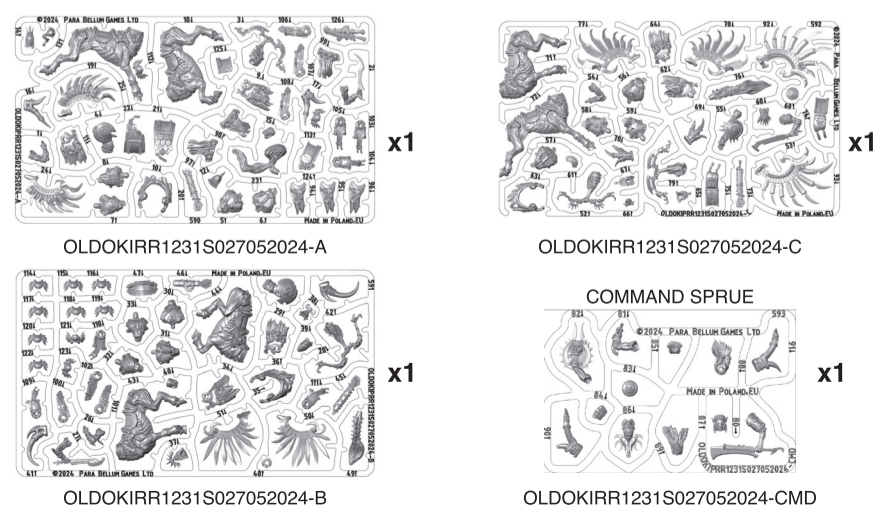
SYMBOL EXPLANATION

- Special Instruction -Please read
- Do not glue the components
- Rotate part
- Variant assembly
- Detail view
- Glue the component
- Stage complete
- Repeat process

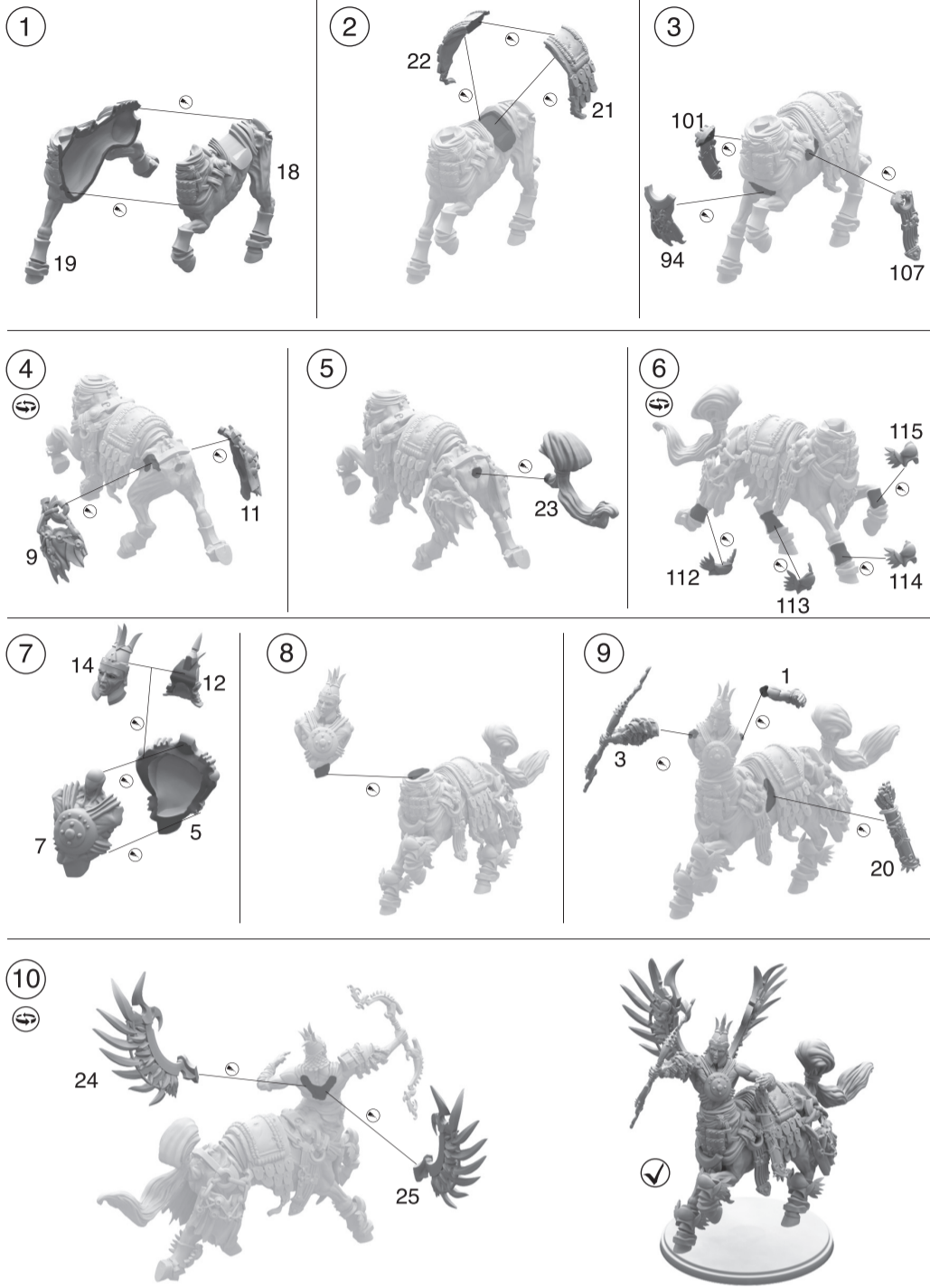
You will need:



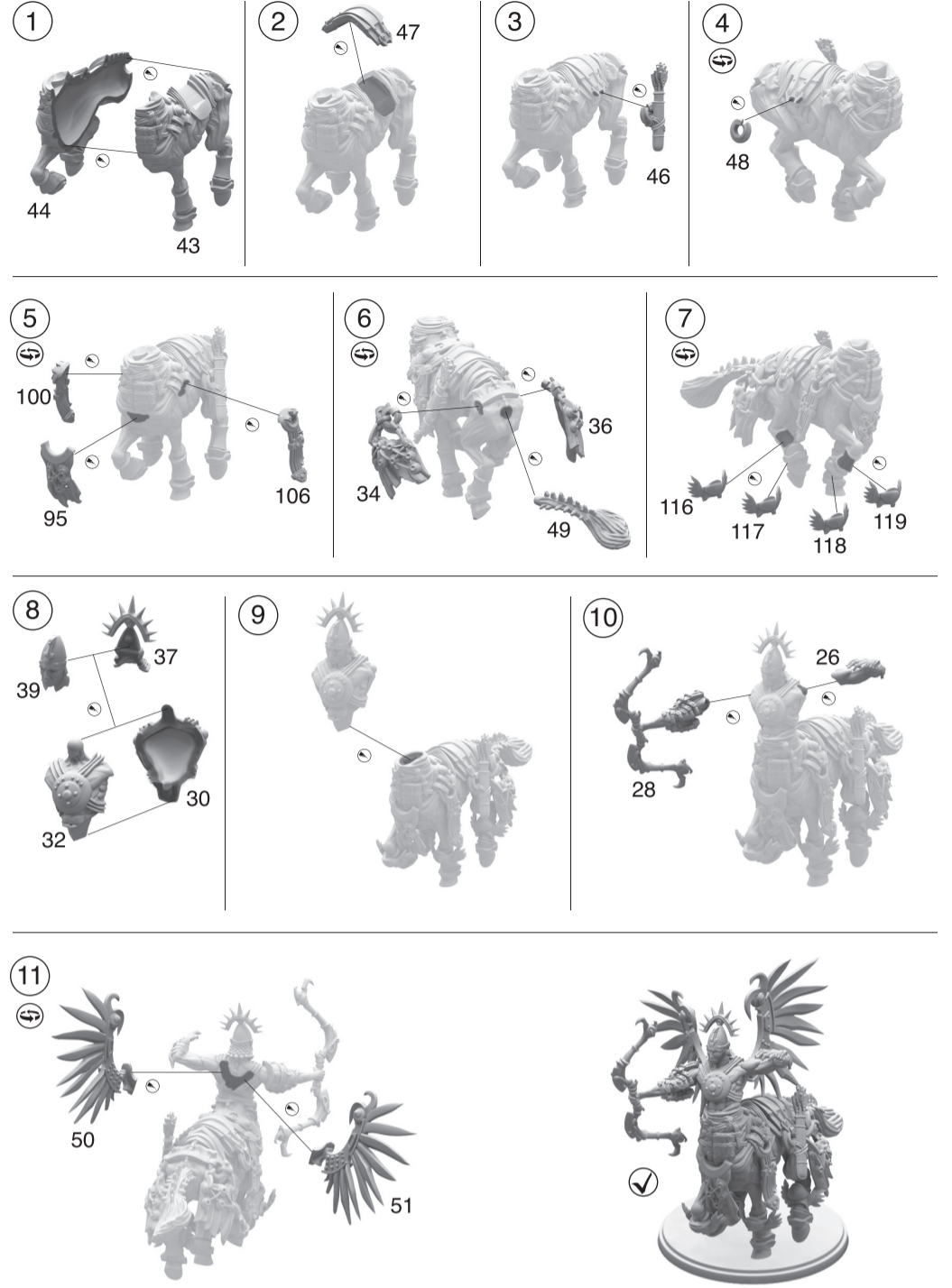
Customizability: This kit offers an extensive array of customization options. All **heads** and **torsos** have corresponding numbers and can be paired with any horse body, all **heads** and **decorative parts** are fully interchangeable in all poses so as to provide numerous variations and unique poses to one's regiment.



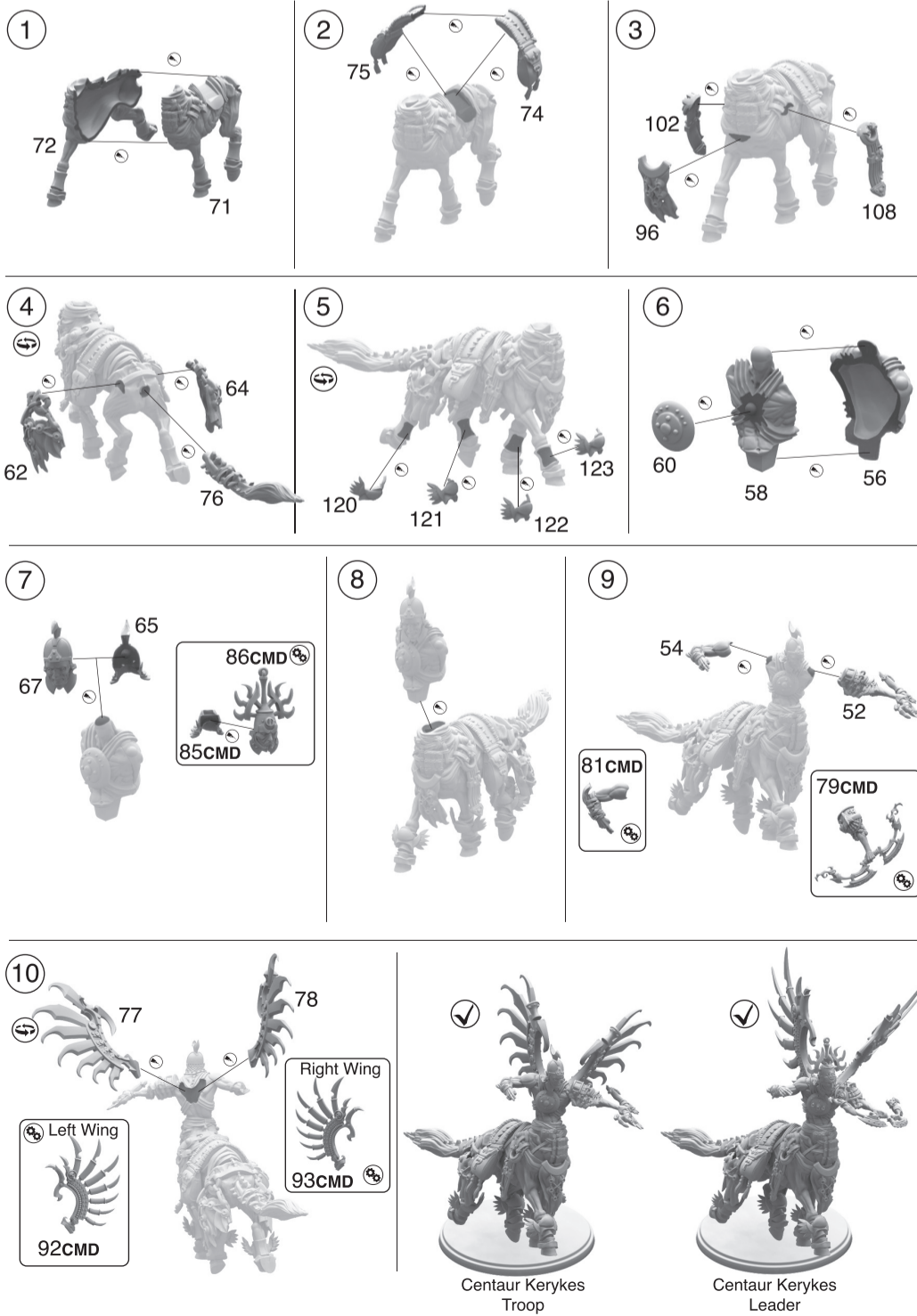
Centaur Kerykes - Pose 1



Centaur Kerykes - Pose 2



Centaur Kerykes - Pose 3 and Leader



Centaur Prodrmoi - Pose 1

